

M/V GULF TIGER



Platform Supply Vessel DP11
Built 2010

REGISTRATION

Operator	Gulf Offshore Logistics, LLC
Delivered	2010
Builder	Thoma-Sea Ship Builders, LLC
Flag	USA
Classification	U.S.C.G. Certified USCG Subchapter "L", ABS Classed +AMS, +A1, +DPS-2 Circle E; S.O.L.A.S
Official No.	1223870

MAIN PARTICULARS

Length Overall	250ft	76.2m
Beam	54ft	16.46m
Depth	17ft	5.18m
Light Draft	6.5ft	1.99m
Loaded Draft	14ft	4.27m
Lightship	1,592 tons	
Deadweight	2,650 tons	
Tonnage	1,659 ITC	

CAPACITIES

Drill Water (also for potable water)	117,000 USG	443m3
Fuel	180,000 USG	681m3
Potable Water	83,000 USG	314m3
Bulk Mud	6,000ft3	170m3
Liquid Mud	8,500Bbls	997m3

CARGO DECK

Length	171ft	52.12m
Width	44ft	13.2m
Clear Deck Area	7,524ft2	701m2

MACHINERY

Main Engines	(2) Caterpillar 3516 @ 2100 BHP
Z-Drives	(2) Lips/Wartsila FS225-S/BN-K 360 Degree Azmuthing Thruster
Gensets	(2) Caterpillar C-18 @ 425 KW
Emergency Genset	(1) Caterpillar C-4.4 @ 99 KW
Bow Thrusters	(2) Lips/Wartsila CT175 CPP
Bow Thruster Engines	(2) Caterpillar C-32 @ 750 BHP
Liquid Mud Pumps	(2) 200 Hp Mission Magnum 6x4x14
Circulating Pumps	(3) 40 Hp Mission Magnum 4x3x12
Bulk Compressor	Quincy QSF-150, 100 PSI @ 150 HP

PERFORMANCE

Maximum Speed	12 Knots
Cruising Speed	10 Knots
Max Fuel Consumption	200 USG/Hr
Cruising Fuel Consumption	135 USG/Hr

DISCHARGE RATES

Ballast/Drill Water	400GPM @ 280FT
Fuel	400GPM @ 280FT
Liquid Mud	700GPM @ 240FT
Potable Water	400GPM @ 280FT

DRY BULK

Dry Bulk	80 PSI 20.82m3/hr
----------	-------------------

ACCOMMODATION

Cabins/Berths	13/36
Mess	10
Lounge	1
Heads	7

ELECTRONICS

Radar	(2) Furuno FR-8122
GPS	Furuno GP-37
SSB	Furuno FS-1503
VHF	(2) Furuno FM-8800S
AIS	Furuno FA-150
Depth Sounder	Furuno FE-700
GMDSS	Furuno RC-1815 CyScan RadaScan
Dynamic Positioning	MT Electronics DP-2 + JX
E-Mail & Comm.	MS Office GDS iDirect VSAT
Electronic Charts	Maptech Navigator Pro

FIRE FIGHTING

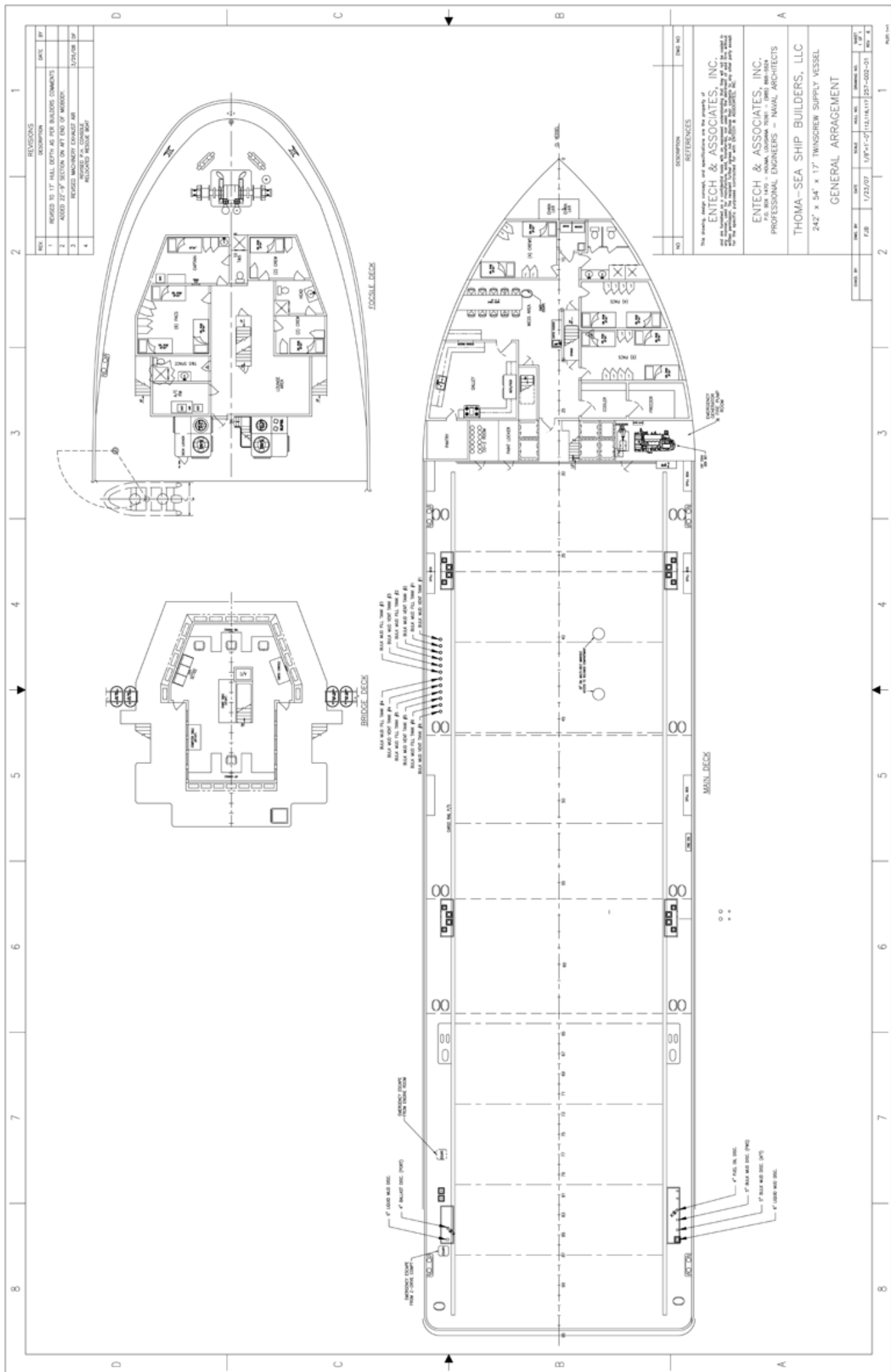
Fire Monitor-1900 GPM

OTHER FEATURES

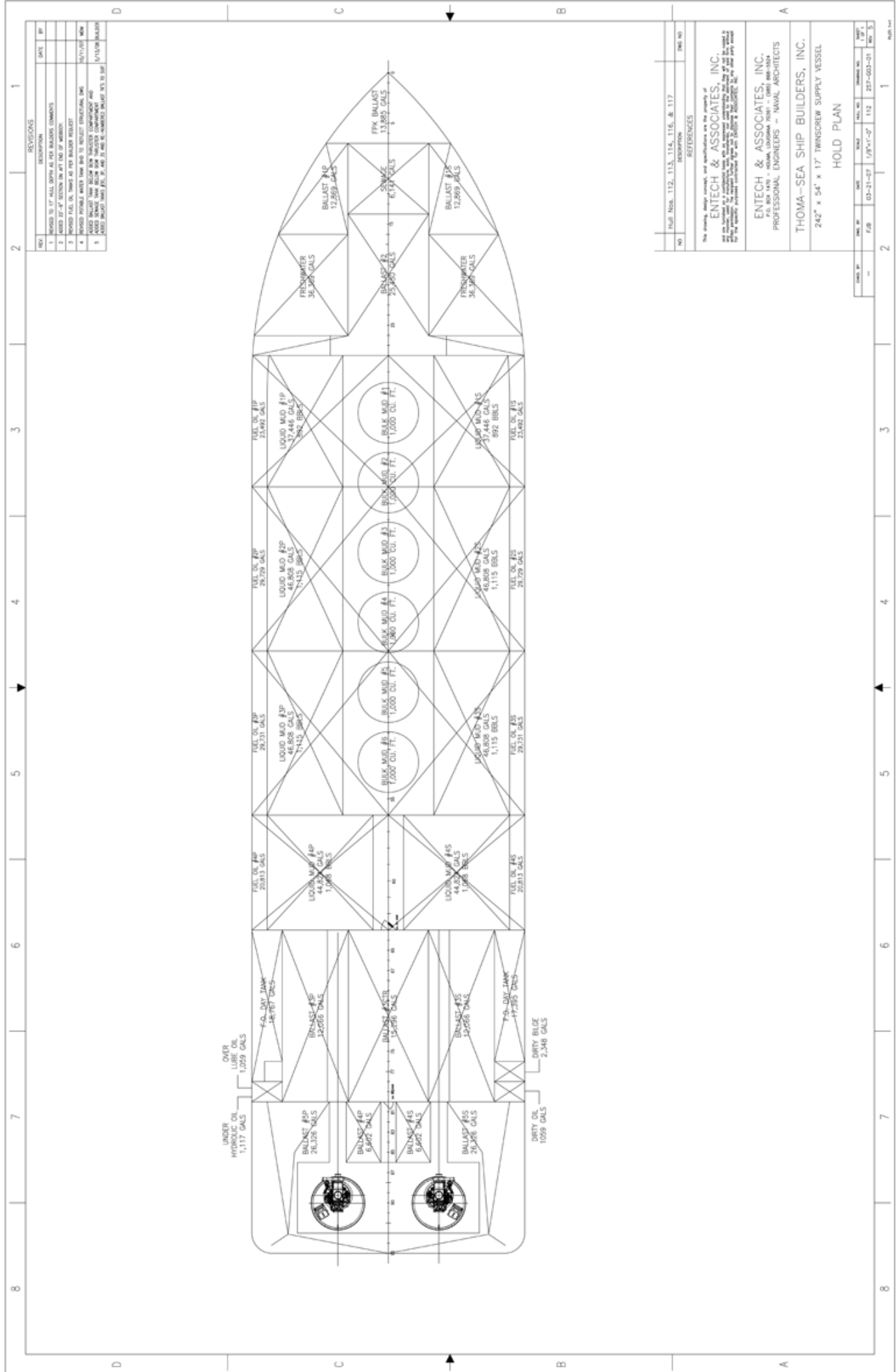
Beier Engine Alarm
Rescue Boat
Electric Welding Machine
McMurdo Lifeboat VHF

NOTICE: The data contained herein is provided for convenience of reference to allow users to determine the suitability of the Company's equipment. The data may vary from the current condition of equipment which can only be determined by physical inspection. Company has exercised due diligence to insure that the data contained herein is reasonably accurate. However, Company does not warrant the accuracy completeness of the data. In no event shall Company be liable for any damages whatsoever arising out of the use inability to use the data contained herein.

M/V Gulf Tiger 250' DP2 PSV



M/V Gulf Tiger 250' DP2 PSV



REV	DESCRIPTION	DATE	BY
1	ISSUED TO 17' HULL BIRTH AS FOR BIDDING COMMENTS		
2	ISSUED TO 17' HULL BIRTH AS FOR BIDDING COMMENTS		
3	ISSUED TO 17' HULL BIRTH AS FOR BIDDING COMMENTS		
4	ISSUED TO 17' HULL BIRTH AS FOR BIDDING COMMENTS		
5	ISSUED TO 17' HULL BIRTH AS FOR BIDDING COMMENTS		
6	ISSUED TO 17' HULL BIRTH AS FOR BIDDING COMMENTS		
7	ISSUED TO 17' HULL BIRTH AS FOR BIDDING COMMENTS		
8	ISSUED TO 17' HULL BIRTH AS FOR BIDDING COMMENTS		
9	ISSUED TO 17' HULL BIRTH AS FOR BIDDING COMMENTS		

NO	FIG. NO.	DESCRIPTION	DATE
1	112, 113, 114, 116, & 117	REFERENCES	

The drawing, design concept, and specifications are the property of
ENTECH & ASSOCIATES, INC.
 10000 W. 10TH AVENUE, SUITE 1000, DENVER, CO 80202
 TEL: 303.755.1000 FAX: 303.755.1001
 WWW.ENTECH-INC.COM
 FOR THE HULL BIRTH CONTRACTOR: THOMAS-SEA SHIP BUILDERS, INC.
 242" x 54" x 17' TWINSCREW SUPPLY VESSEL
 HOLD PLAN

NO	FIG. NO.	DESCRIPTION	DATE
1	112, 113, 114, 116, & 117	REFERENCES	