

# M/V MARIE ELISE



Platform Supply Vessel DP11  
Built 2010

## REGISTRATION

Operator	Gulf Offshore Logistics, LLC
Delivered	2010
Builder	Thoma-Sea Ship Builders, LLC
Flag	USA
Classification	U.S.C.G. Certified USCG Subchapter "L", ABS Classed +AMS, +A1, +DPS-2 Circle E; S.O.L.A.S EEP Certified for 100 Passengers
Official No.	1223872

## MAIN PARTICULARS

Length Overall	269ft	82.1m
Beam	54ft	16.46m
Depth	17ft	5.18m
Light Draft	7.5ft	2.28m
Loaded Draft	14ft	4.27m
Deadweight	2,980 tons	
Tonnage	1,839 ITC	

## CAPACITIES

Drill & Potable Water	248,700 USG	943m <sup>3</sup>
Fuel	285,000 USG	1.078m <sup>3</sup>
Bulk Mud	6,000ft <sup>3</sup>	170m <sup>3</sup>
Liquid Mud	10,500Bbls	1,232m <sup>3</sup>

## CARGO DECK

Length	196ft	59.8m
Width	44ft	13.2m
Clear Deck Area	8,624ft <sup>2</sup>	790m <sup>2</sup>

## MACHINERY

Main Engines	(2) Caterpillar 3516 @ 2100 BHP
Z-Drives	(2) Rolls Royce MK2 Z-Drives 360 Degree Azmuthing Thruster
Gensets	(2) Caterpillar C-18 @ 425 KW
Emergency Genset	(1) Caterpillar C-4.4 @ 99 KW
Bow Thrusters	(2) Rolls Royce CPP
Bow Thruster Engines	(2) Caterpillar C-32 @ 750 BHP
Liquid Mud Pumps	(2) 300 Hp Mission Magnum 6x4x14
Circulating Pumps	(3) 40 Hp Mission Magnum 4x3x12
Bulk Compressor	Quincy QSF-150, 100 PSI @ 150 HP

## PERFORMANCE

Maximum Speed	12 Knots
Cruising Speed	10 Knots
Max Fuel Consumption	200 USG/Hr
Cruising Fuel Consumption	135 USG/Hr

## DISCHARGE RATES

Ballast/Drill Water	400GPM @ 280FT
Fuel	400GPM @ 280FT
Liquid Mud	700GPM @ 240FT
Potable Water	400GPM @ 280FT

## DRY BULK

Dry Bulk	80 PSI 20.82m <sup>3</sup> /hr
----------	--------------------------------

## ACCOMMODATION

Cabins/Berths	7/25
Mess	10
Lounge	1
Heads	4

## ELECTRONICS

Radar	(2) Furuno FR-8122
GPS	Furuno GP-37
SSB	Furuno FS-1503
VHF	(2) Furuno FM-8800S
AIS	Furuno FA-150
Depth Sounder	Furuno FE-700
GMDSS	Furuno RC-1815 CyScan RadaScan
Dynamic Positioning	Beier IVCS 2000
E-Mail & Comm.	OCENS MAIL KVH VSAT Broadband
Electronic Charts	Maptech Navigator Pro

## FIRE FIGHTING

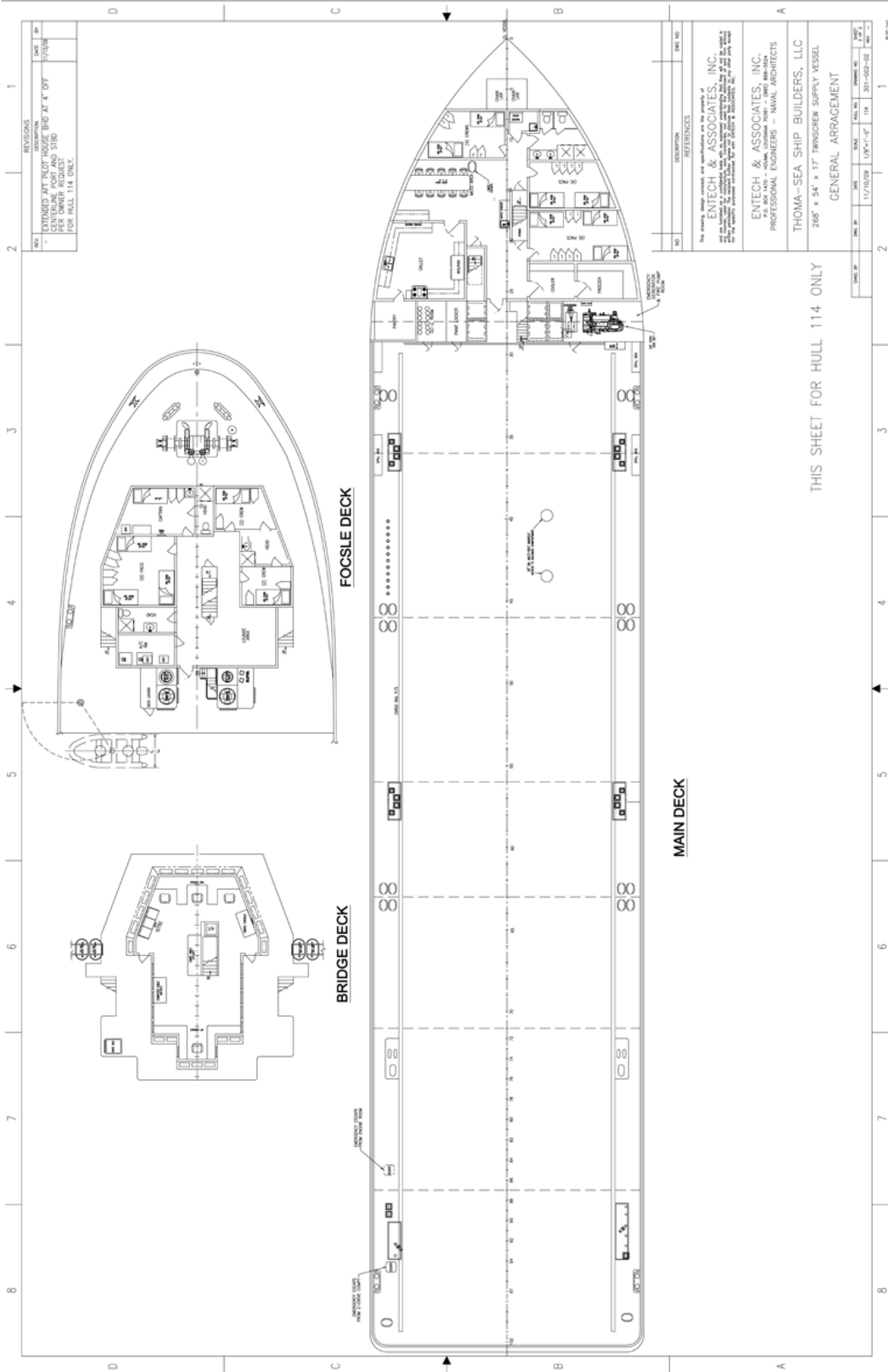
Fire Monitor-1900 GPM
-----------------------

## OTHER FEATURES

Sentinel Engine Alarm
Rescue Boat
Electric Welding Machine

NOTICE: The data contained herein is provided for convenience of reference to allow users to determine the suitability of the Company's equipment. The data may vary from the current condition of equipment which can only be determined by physical inspection. Company has exercised due diligence to insure that the data contained herein is reasonably accurate. However, Company does not warrant the accuracy completeness of the data. In no event shall Company be liable for any damages whatsoever arising out of the use inability to use the data contained herein.

# M/V Marie Elise 270' DP2 PSV



REVISIONS

NO.	DESCRIPTION	DATE	BY
001	EXTENDED AFT PILOT HOUSE BHD AT 4' OFF CENTERLINE PORT AND STARBOARD PER OWNER REQUEST FOR HULL 114 ONLY.	1/1/2018	

DESCRIPTION

NO.	DESCRIPTION	DATE	NO.
REFERENCES			
The drawing, design details, and specifications are the property of ENTECH & ASSOCIATES, INC. All rights reserved. No part of this drawing may be reproduced or transmitted in any form or by any means, electronic or mechanical, including photocopying, recording, or by any information storage and retrieval system, without the prior written permission of ENTECH & ASSOCIATES, INC.			
ENTECH & ASSOCIATES, INC. P.O. BOX 1470 - HOUMA, LOUISIANA 70121 - (840) 882-2024 PROFESSIONAL ENGINEERS - NAVAL ARCHITECTS			
THOMA-SEA SHIP BUILDERS, LLC 268' x 54' x 17' TWINSCREW SUPPLY VESSEL GENERAL ARRANGEMENT			

THIS SHEET FOR HULL 114 ONLY

DATE	SCALE	SHEET NO.	TOTAL SHEETS
11/10/19	1/8"=1'-0"	114	301-022-02

